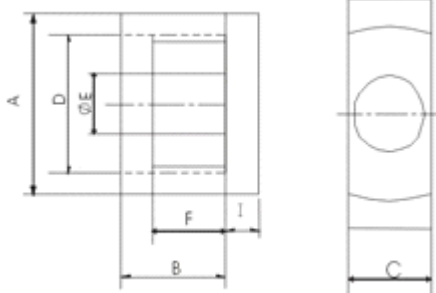
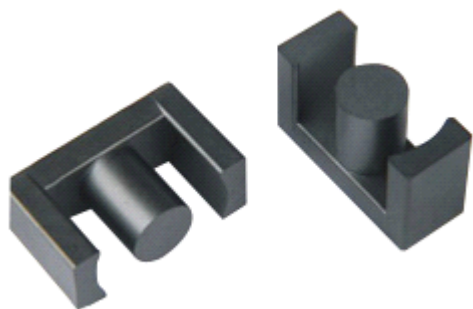


## EER CORES



### EER CORES (Dimensions)

TYPE	Dimensions							Unit/mm
	Fig	A	2B	C	D	E	2F	W(g/set)
EER09/05	2	9.35±0.15	4.90±0.10	4.90±0.10	7.50min	3.40±0.10	3.35±0.15	0.6
EER12/05	3	11.80±0.20	5.10±0.20	7.00±0.20	9.40±0.20	4.60±0.15	2.70±0.20	1.3
EER23/24	2	23.20±0.40	23.90±0.30	8.20±0.20	18.90min	6.90±0.15	17.60±0.40	11.0
EER24/29	1	24.40±0.50	28.90±0.30	8.50±0.30	18.00min	8.50±0.20	20.20±0.40	19.0
EER25/19	1	25.50±0.50	18.60±0.40	7.50±0.20	20.20±0.40	7.50±0.25	12.40±0.40	11.2
EER25/21	1	25.50±0.40	21.40±0.30	7.50±0.20	20.20±0.40	7.50±0.15	15.20±0.30	12.3
EER26/16	1	25.50±0.50	16.00±0.40	7.50±0.20	19.80min	7.50±0.15	9.80±0.40	9.7
EER26/19	1	25.50±0.50	19.00±0.40	7.50±0.20	19.80min	7.50±0.15	12.80±0.40	11.0
EER28/10	2	28.50±0.50	9.70±0.30	11.40±0.25	21.20min	9.90±0.25	2.30±0.15	13.4
EER28/12	2	28.50±0.50	11.70±0.30	11.40±0.25	21.20min	9.90±0.25	4.30±0.20	15.0
EER28/17	2	28.50±0.50	17.00±0.40	11.40±0.25	21.20min	9.90±0.25	10.50±0.50	18.5
EER28/20	2	28.55±0.50-0.40	20.00±0.30	11.40±0.25	21.40min	9.90±0.25	12.80 +0.50-0.00	21.0
EER28/21	2	28.50±0.50	21.00±0.40	11.40±0.25	21.70±0.40	9.90±0.25	12.00±0.40	23.6
EER28/22	2	28.50±0.60	21.95±0.25	11.40±0.30	25.00min	9.90±0.30	13.25±0.25	23.7

TYPE	Dimensions							Unit/mm
	Fig	A	2B	C	D	E	2F	W(g/set)
EER28/28	2	28.50±0.60	28.00±0.50	11.40±0.30	21.20min	9.90±0.30	19.30±0.50	29.0
EER28/28N	2	28.50±0.60	28.00±0.50	11.40±0.30	21.80min	9.90±0.30	19.30±0.50	28.0
EER28/34	2	28.50±0.50	33.80±0.40	11.40±0.25	21.70±0.40	9.90±0.25	25.00±0.40	34.0
EER28/34N	2	28.50±0.60	33.80±0.50	11.40±0.30	21.80min	9.90±0.30	25.00±0.50	33.0
EER28/35	2	28.50±0.50	35.00±0.40	11.40±0.25	21.70±0.50	9.90±0.25	26.20±0.50	35.0
EER29/28	2	29.40±0.50	28.00±0.50	11.40±0.30	21.20min	9.90±0.30	19.30±0.30	29.0

TYPE	Dimensions							Unit/mm
	Fig	A	2B	C	D	E	2F	W(g/set)
EER29/34	2	29.40±0.50	34.00±0.50	11.40±0.30	21.20min	9.90±0.30	25.00±0.50	32.0
EER30/16	2	30.00±0.50	16.00±0.30	20.00±0.30	26.00±0.40	11.00±0.20	10.60±0.40	27.0
EER30/19	2	30.00±0.50	18.80±0.30	20.00±0.30	25.40±0.40	13.30±0.20	13.20±0.30	33.60
EER30/20	1	29.80±0.80	20.20±0.40	9.50±0.30	22.00min	9.50±0.30	12.20±0.40	19.50
EER30/22	1	29.80±0.80	21.80±0.40	9.50±0.30	22.00min	9.50±0.30	12.20±0.40	21.0
EER30/32	1	29.80±0.70	31.60±0.50	9.50±0.30	22.00min	9.50±0.30	22.00±0.50	28.0
EER33/35	2	33.00±0.50	34.60±0.50	13.80±0.25	25.00±0.50	12.50±0.25	25.60±0.50	48.5
EER34/26	1	34.20±0.80	26.00±0.40	10.80±0.30	25.60min	10.80±0.30	15.60±0.60	32.0
EER34/34	1	34.20±0.80	34.60±0.40	10.80±0.30	25.60min	10.80±0.30	24.20±0.60	39.0
EER34/35	1	34.20±0.80	35.80±0.40	10.80±0.30	25.60min	10.80±0.30	25.40±0.60	40.0

TYPE	Dimensions							Unit/mm
	Fig	A	2B	C	D	E	2F	W(g/set)
EER35/30	1	35.00±0.70	30.00±0.40	11.30±0.40	25.30min	11.30±0.30	20.00±0.40	39.0
EER35/34	1	35.30±0.50	33.60±0.40	11.30±0.30	26.40min	11.30±0.30	21.60±0.40	44.0
EER35/38	1	35.30±0.50	38.00±0.40	11.30±0.25	27.00±0.50	11.30±0.25	26.00±0.50	48.0
EER35/42	1	35.30±0.50	41.80±0.40	11.30±0.25	27.00±0.50	11.30±0.25	29.80±0.50	52.0
EER36/43	1	35.30±0.50	43.00±0.50	11.30±0.30	26.40min	11.30±0.30	31.00±0.50	53.0
EER36/43	1	36.00±0.60	43.00±0.50	11.30±0.30	27.00min	11.30±0.30	31.00±0.50	53.5
EER36/43D	1	36.80±0.60	43.00±0.50	11.30±0.30	28.30min	11.30±0.30	31.00±0.50	55.0
EER39/36	1	39.30±0.50	36.40±0.50	12.70±0.30	29.30min	12.70±0.30	26.00±0.50	54.0
EER39/40	1	39.30±0.50	40.40±0.50	12.70±0.30	29.30min	12.70±0.30	30.00±0.50	60.0
EER39/42	1	39.30±0.50	42.00±0.50	12.70±0.30	29.30min	12.70±0.30	31.60±0.50	61.0
EER39/43	1	39.30±0.50	42.40±0.50	12.70±0.30	29.30min	12.70±0.30	32.00±0.50	61.5
EER39/45	1	39.30±0.50	44.60±0.40	12.70±0.30	30.10±0.60	12.70±0.30	34.20±0.50	66.0
EER39/42	2	40.00±0.80-0.50	42.60±0.40	15.00±0.20	30.700min	14.00±0.25	30.60±0.40	79.0
EER40/45	1	40.00±0.80	44.80±0.50	13.30±0.30	29.00min	13.30±0.30	30.80±0.50	78.0
EER40/45A	2	40.00 ±0.80-0.50	45.00±0.40	15.00±0.20	30.70min	14.00±0.25	33.00±0.40	82.0

## Core Ser Parameters

Type	C1(mm)	Le(mm)	Ae(mm)	Ve(mm)	AL±25%(nH/N)	
					Lp4	Lp44
EER09/05	1.68	14.2	8.47	120.27	1050	1100
EER12/05	0.91	15.2	16.75	254.60	1900	2000
EER23/24	1.41	56.4	39.9	2250.36	1500	1550
EER24/29	1.06	62.3	59.0	3675.7	2000	2100
EER25/19	1.20	52.9	44.1	2332.89	1750	1850
EER25/21	1.20	47.2	44.1	2332.89	1700	1750
EER26/16	0.95	42.3	44.5	1882.35	2200	2300
EER26/19	1.09	48.6	44.3	2139.69	1900	2000
EER28/10	0.34	28.0	83.4	2335.20	5600	5850
EER28/12	0.38	31.8	83.3	2648.94	5700	5950
EER28/17	0.55	43.4	78.9	3424.26	3400	3550
EER28/20	0.60	49.0	81.0	3969.00	3300	3450
EER28/21	0.54	48.0	88.2	4192.92	3150	4100
EER28/22	0.59	50.8	85.3	4332.24	4050	4200

Type	C1(mm)	Le(mm)	Ae(mm)	Ve(mm)	AL±25%(nH/N)	
					Lp4	Lp44
EER28/28	0.73	63.0	86.0	5418.00	2850	3000
EER28/28N	0.76	63.4	83.6	5300.24	2800	2900
EER28/34	0.87	74.4	85.4	6319.60	2650	2750
EER28/34N	0.90	74.8	83.1	6215.88	2450	2550
EER28/35	0.89	76.1	85.5	6506.55	2300	2400
EER29/28	0.76	64.2	85.2	5770	2700	2750
EER28/34	0.88	75.5	85.2	6430	2400	2450
EER30/16	0.40	43.2	109.0	4708.80	5700	5950
EER30/19	0.34	47.2	137.0	6466.40	6100	6350
EER30/20	0.70	51.0	71.9	3666.90	3000	3150
EER30/22	0.66	51.2	78.0	3993.60	3050	3200
EER30/32	0.93	70.6	76.0	5365.60	2300	2400
EER33/35	0.62	77.8	125.0	9725.00	3250	3400

Type	C1(mm)	Le(mm)	Ae(mm)	Ve(mm)	AL±25%(nH/N)	
					Lp4	Lp44
EER34/26	0.63	61.9	98.4	6090.96	2850	2950
EER34/34	0.81	78.6	97.5	7663.50	2900	3050
EER34/35	0.81	79.0	97.0	7663.00	2750	2850

Type	C1(mm)	Le(mm)	Ae(mm)	Ve(mm)	AL±25%(nH/N)	
					Lp4	Lp44
EER35/30	0.66	70.3	107.0	7522.10	2850	2950
EER35/34	0.68	74.7	109.0	8202.06	3300	3450
EER35/38	0.77	83.5	108.4	9051.40	2950	3050
EER35/42	0.83	91.0	109.0	9919.00	2700	2800
EER35/43	0.85	93.0	109.0	10137.00	2600	2700
EER36/43	0.87	94.1	108.1	10172.21	2500	2600
EER36/43D	0.91	95.4	104.6	9985.74	2450	2550
EER39/36	0.68	84.6	125.0	10575.00	3500	3650
EER39/40	0.76	94.4	123.8	11686.72	3150	3250
EER39/42	0.80	98.4	123.4	12142.56	3000	3100
EER39/43	0.80	98.4	123.4	12142.56	3000	3100
EER39/45	0.84	102.8	123.0	12644.40	2900	3000
EER40/42	0.61	96.3	158.0	15215.40	3450	3600
EER40/45	0.65	97.4	151.0	14707.40	3600	3750
EER40/45A	0.64	101.0	151.0	15857.00	3250	3400