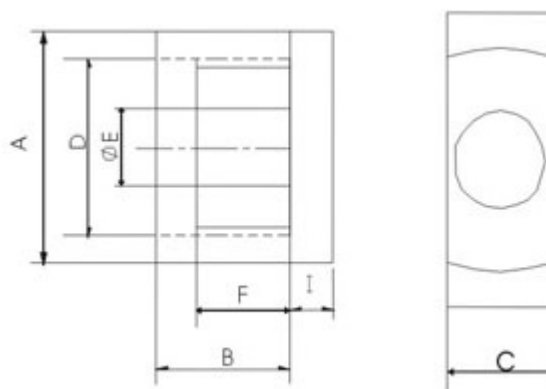


## EIR CORES



### EIR CORES (Dimensions)

TYPE	Dimensions							Unit/mm
	A	B	C	D	E	F	I	W(g/set)
EIR10/4	9.9±0.15	3.2±0.1	7.8±0.1	8.1±0.15	3.7±0.1	1.05±0.1	1.05±0.10	0.5
EIR12/5	12.0±0.15	3.55±0.1	9.0±0.2	10.0±0.25	4.5±0.1	2.55±0.1	1.0±0.05	1.6
EIR12/5A	12.4±0.2	4.1±0.1	5.0±0.15	10.4min	3.4±0.1	3.1±0.1	0.9±0.1	0.9
EIR13/4	12.8±0.3	2.85±0.1	8.7±0.25	11.2±0.3	5.0±0.15	1.75±0.15	1.1±0.1	1.4
EIR20/9	20.0±0.35	6.3±0.1	14.0±0.3	18.0±0.35	8.8±0.15	4.1±0.15	2.3 ±0.1	8.4
EIR25/10	25.0±0.4	8.0±0.1	18.0±0.3	22.0±0.4	11.0±0.2	5.6±0.15	2.3±0.1	14.4
EIR28/18	28.55±0.55	15.0±0.2	11.4±0.25	21.2min	9.9±0.25	9.65±0.25	3.5±0.3	19.9
EIR35/26	35.0±0.5	20.7±0.3	11.3±0.3	25.6min	11.3±0.25	14.7±0.3	5±0.2	34.0

### Core Set Parameters

TYPE	C1(mm)	Ae(mm)	Le(mm)	Ve(mm)	AL±25%(nH/N)	
					Lp4	Lp44
EIR10/4	1.48	8.3	12.3	102	970	1030
EIR12/5	0.14	18.0	16.9	305	1500	1610
EIR12/5A	1.68	9.8	16.5	162	910	1000
EIR13/4	0.64	20.2	13.0	264	2310	2370
EIR20/9	0.43	59.8	25.8	1540	4350	4580
EIR25/10	0.32	92.3	29.2	2699	5000	5100
EIR28/18	0.55	82.1	45.5	3734	3800	4120
EIR35/26	0.57	105.7	60.3	6378	3800	4180